

Kite

Metal Seating Collection

When ordering this product, specification codes must be added to unit Model Number, as shown below.

NOTE: Upholstery and/or additional options must be specified separately.

Kite



METAL FRAME
FINISH -

MODEL
NUMBER -

METAL FRAME
FINISH -

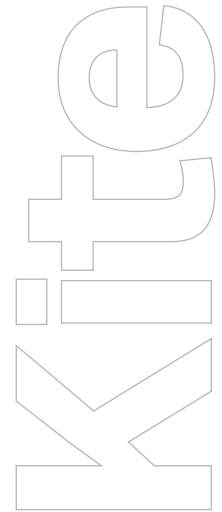
KT400 -SS

- GM** Gunmetal
- MB** Metallic Beige
- SB** Smooth Black
- SS** Smooth Silver
- TB** Textured Black
- TN** Textured Nickel

Kite

Metal Seating Collection

Different fabrics may be specified on the seat and on the back. In this case, use the higher grade of the two. No additional upcharge applies. All prices are in US dollars (USD).



KT400

DESCRIPTION –

Metal Folding Chair
16" seat width

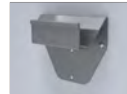


DIMENSIONS –

Width 19
Depth 22
Height 34
Seat Width 16
Seat Depth 16.5
Seat Height 18
COM Yard Back 0.5
COM Yard Seat 0.5
Cubic Feet 8
Ship Weight 19

OPTIONS –

Moisture barrier +35
Wall mount bracket (KICWB) +145



WALL MOUNT BRACKET
W 7.5 D 2.5 H 6

MODEL NO.	COM/1	2	3	4	5	6	7	8
KT400	743	785	827	870	912	954	996	1038

KT500

DESCRIPTION –

Metal Folding Chair
18" seat width

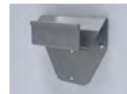


DIMENSIONS –

Width 21
Depth 22
Height 34
Seat Width 18
Seat Depth 16.5
Seat Height 18
COM Yard Back 0.5
COM Yard Seat 0.5
Cubic Feet 9
Ship Weight 20

OPTIONS –

Moisture barrier +35
Wall mount bracket (KICWB) +145



WALL MOUNT BRACKET
W 7.5 D 2.5 H 6

MODEL NO.	COM/1	2	3	4	5	6	7	8
KT500	838	887	935	984	1033	1079	1130	1179