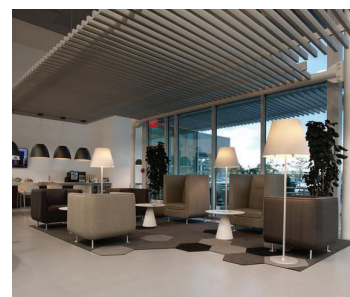


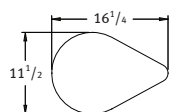
HUSH LOUNGE // DESIGNED BY 5D STUDIO



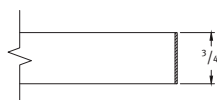
PRODUCT FEATURES:

- » Low and high back models.
- » Legs are 4" diameter, 5" high and feature 1" maximum height adjustability for leveling purposes.
- » Maximum weight capacity is 350 lbs.
- » **Note: Legs must be field installed.**
- » All dimensions are nominal.

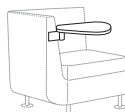
ROTATING TABLET:



Tablet Shape



Wood/Laminate/Corian Top - Edge Profile

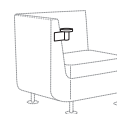


Chair Mounting Bracket Placement

- » Affixed to right or left arm, as specified.
- » Tablet size is 16 1/4" L x 11 1/2" D x 3/4" thick with 270-degree tablet turning radius.
- » Surface finish options: beech veneer, laminate or Corian.
- » For maximum durability, a Corian tablet or laminate surface with a clear coat edge finish is recommended.
- » Refer to Terms and Conditions for edge finish details.
- » Mounting bracket finished in 0299 Polished Aluminum.

CUP HOLDER:

- » Dimensions: 5" outer diameter, 3 1/2" inner diameter (cup size) x 1/4" deep.
- » Cup holder mounting bracket finished in 0299 Polished Aluminum and features black leather insert.



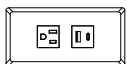
SPECIFICATIONS:

- » Metal legs available in four standard finishes.
- » Veneer tablet available in all standard and custom wood finishes on beech.
- » For Super Matte Sable Beech, premium wood finish upcharge applies. Refer to options section for pricing.
- » For custom wood finishes, please add one-time upcharge of \$472 List per color per order.
- » For custom laminates, add \$590 List per color per order. Pre-approval required, please contact client services.

HUSH LOUNGE // DESIGNED BY 5D STUDIO

POWER UNITS:

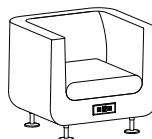
- » Units are positioned front and center below the seat cushion, unless otherwise specified.
- » Black or white finish with 120" electrical cord (no hardwire option available for this series).
- » UL listed.



PX3
5⁷/₈" W x 2⁷/₈" D
One outlet, one USB-A and one USB-C charging port



PX4
7¹/₄" W x 2⁷/₈" D
Two outlets, one USB-A and one USB-C charging port



METAL LEG FINISH COLORS:

- » 0299 Polished Aluminum
- » 0405 Charcoal Grey
- » 0535 Metallic Silver
- » 0630 Satin Black

CORIAN® COLORS:

- » CWN Designer White
- » CLN Linen
- » CTD Witch Hazel
- » CRC Rain Cloud
- » CGQ Grey Onyx
- » CSQ Stonique

ORDERING REQUIREMENTS:

- » Model number
- » Metal leg finish
- » Upholstery selection
- » Options, as applicable

HUSH LOUNGE // DESIGNED BY 5D STUDIO

ORDERING REQUIREMENTS:

- » Model number
- » Metal leg finish
- » Upholstery selection
- » Options, as applicable

MODEL NUMBER	PRODUCT SPECIFICATIONS	FABRIC GRADES										LEATHER	
		COM	A	1	2	COL 3	4	5	6	7	8	L1	L2
5551	Lounge Chair, Low Back W 34 ¹ / ₄ D 30 H 31 Seat Height 17 ¹ / ₂ Inside Seat Width 24 Inside Seat Depth 20 ¹ / ₄ 5 ³ / ₄ yds. 77 lbs. COL 115 sq. ft.	2179	2513	2680	2783	2950	3134	3306	3479	3640	3830	4617	5221
5552	Love Seat, Low Back W 54 ¹ / ₂ D 30 H 31 Seat Height 17 ¹ / ₂ Inside Seat Width 44 ¹ / ₂ Inside Seat Depth 20 ¹ / ₂ 7 ¹ / ₄ yds. 102 lbs. COL 145 sq. ft.	2860	3281	3491	3622	3832	4064	4281	4499	4702	4941	5934	6696
5553	Sofa, Public (low back) W 76 ¹ / ₂ D 30 H 31 Seat Height 17 ¹ / ₂ Inside Seat Width 66 ¹ / ₂ Inside Seat Depth 20 ¹ / ₂ 9 yds. 126 lbs. COL 180 sq. ft.	3856	4378	4639	4801	5062	5350	5620	5890	6142	6439	7672	8617
5581	Lounge Chair, Private (high back) W 36 ¹ / ₂ D 33 ¹ / ₂ H 45 ¹ / ₂ Seat Height 17 ¹ / ₂ Inside Seat Width 26 Inside Seat Depth 20 ¹ / ₂ 8 ¹ / ₂ yds. 97 lbs. COL 170 sq. ft.	2975	3468	3715	3868	4114	4386	4641	4896	5134	5415	6579	7472

OPTIONS

-TAR10	Veneer/Laminate Rotating Tablet, Right (as seated)	422
-TAL10	Veneer/Laminate Rotating Tablet, Left (as seated)	422
-TAR10-CO	Corian Rotating Tablet, Right (as seated)	804
-TAL10-CO	Corian Rotating Tablet, Left (as seated)	804
-CHR01	Outside Mounted Cup Holder, Right (as seated)	173
-CHL01	Outside Mounted Cup Holder, Left (as seated)	173
-PX3-()	Power Matrix 3 (one power, one USB-A, one USB-C)	472
-PX4-()	Power Matrix 4 (dual power, one USB-A, one USB-C)	494
-PFW01	Premium Wood Finish, Rotating Tablet	10
-NS05	Non-Skid Glides	32

Note: For power matrix faceplate, please specify black (-B) or white (-W) finish.

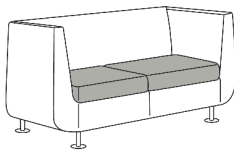
HUSH LOUNGE // DESIGNED BY 5D STUDIO

UPHOLSTERY COMBINATIONS:

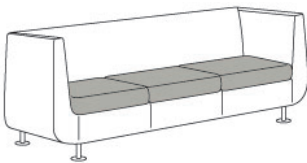
- » When combining two COM/COV/COL fabrics, or fabrics with the same grade, add \$105 List per unit.
- » When combining three COM/COV/COL fabrics, or fabrics with the same grade, add \$135 List per unit.
- » When combining different grades of fabric, price will be based on the highest grade specified.
- » Two-tone upholstery examples and yardage requirements for the most common combinations are listed below. Additional combinations available, please contact client services for yardage requirements and pricing.
- » Note: Yardage amounts are based on fabric which is plain (i.e. non-directional) and a full 54" wide.
- » Appropriate upholstery code must be included.



Code **HS1**
Model COM Requirement
5551 Seat Cushion Only = 1 yd.
5551-S Balance of Chair = 5 yds.



Code **HS2**
Model COM Requirement
5552 Seat Cushion Only = 1 1/2 yds.
 Balance of Love Seat = 6 yds.



Code **HS3**
Model COM Requirement
5553 Seat Cushion Only = 2 1/4 yds.
 Balance of Sofa = 7 yds.



Code **HS8**
Model COM Requirement
5581 Seat Cushion Only = 1 yd.
 Balance of Chair = 7 1/2 yds.



Code **HS9**
Model COM Requirement
5581 Headrest = 3 yds.
 Balance of Chair = 5 3/4 yds.