

# Run II

ergonomic comfort you'll run away with



  
SEATING

great things happen in a chair

The ergonomic chair delivering total body support & comfort.

Discover Run II. The smooth curve in the distinct mesh back provides integrated lumbar support. For a total office solution, pair it with its side/guest chair.





## features

- Available with medium & large seats on the high & mid back models.
- Armless standard on all models.
- Optional tall & extra-tall task stools.
- Optional seat depth adjustment.
- 12 year warranty (5 years for mesh).



Design by  
Studio V

Studio V creates modern, sophisticated and original seating solutions that are ergonomic, beautiful and sustainable. This team of engineers and designers

are based at the Via Seating Factory in Reno NV, where they develop products using a prototyping lab, the latest in 3D modeling software and a materials testing center.

## options

### arms



- Black basic height adjustable arm & textured cap.
- Grey basic height adjustable arm & textured cap.
- Black arm with 8-way adjustments.
- Grey arm with 8-way adjustments.
- Polished arm with 8-way adjustments.
- Black roll back arm.
- Black fixed conference arm with a fixed cap.

### bases



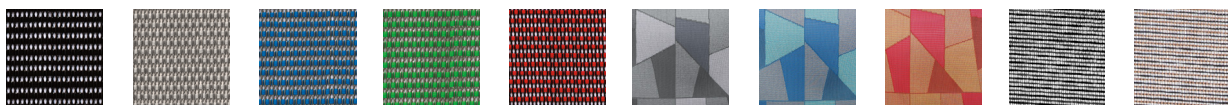
- Standard black frame, black nylon 5-star swivel base.
- Standard grey frame, grey nylon 5-star swivel base.
- Polished aluminum 5-star swivel base.
- Brushed aluminum 5-star swivel base.
- ← Each base can pair with a stool kit/foot ring.

### lumbar option



Optional, easy adjust lumbar support in black or grey.

### mesh colors



- Black.
- Grey.
- Blue.
- Green.
- Red.
- Grey patchwork.
- Blue patchwork.
- Orange patchwork.
- Black Copper Striped.
- Natural Copper Striped.

### frame finishes



- Black.
- Magnet grey.



Please visit our website to find your local representative and browse additional options for this series.

VIA SEATING . COM | 800.433.6614

© Via Seating 2021.

