

Eclipse

designer multipurpose seating



reddot award 2020
winner


via[®]
SEATING

great things happen in a chair

Designer curves make this elegant chair.

Discover vintage beauty and essential comfort with
the 2020 Red Dot Design winning series, Eclipse.
Available as a side, guest & task chair.



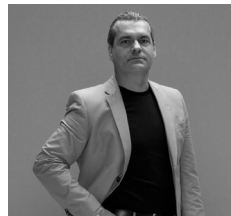
Clean Lines

Inspired by the 50th anniversary of the moon landing, Italian designer Angelo Pinaffo created the Eclipse series. Eclipse chairs have a continuous line, curved like the elliptical orbits of the spherical planets. Their shape generates a clean and essential seat, which conveys lightness.



features

- Available as a stackable v-leg base chair, wood frame guest chair, light task chair & task stool with a foot ring.
- Armless or fixed loop arms.
- Optional arm tablets.
- Optional upholstered seats.
- 6 year warranty.



Design by
Angelo Pinaffo

Angelo Pinaffo was born in Padua in 1966. He studied at the State Institute of Art "Pietro Selvatico" in Padua & the University of Architecture in Venice (IUAV) in the "Architectural Design"

course of study. Pinaffo's constant search for simplicity and great attention to detail, aims to reach an aesthetic and technical originality among form and function.

options

breadth of line



Stackable chair on a v-leg base.



Guest/side chair on a modern wood base.



Light task chair.



Light task stool.



Chair stacking cart.
Stacks 15 high.



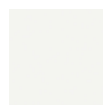
poly colors



Black.



Grey.



White.



Dark Mint.



Cherry Red.



Dusty Rose.

frame finishes



Black.



Chrome.



Please visit our website to find your local representative and browse additional options for this series.

VIASEATING.COM | 800.433.6614

© Via Seating 2021.

via
SEATING